

Introducing Measurabl.

The world's leading platform for ESG data management

Target Setting

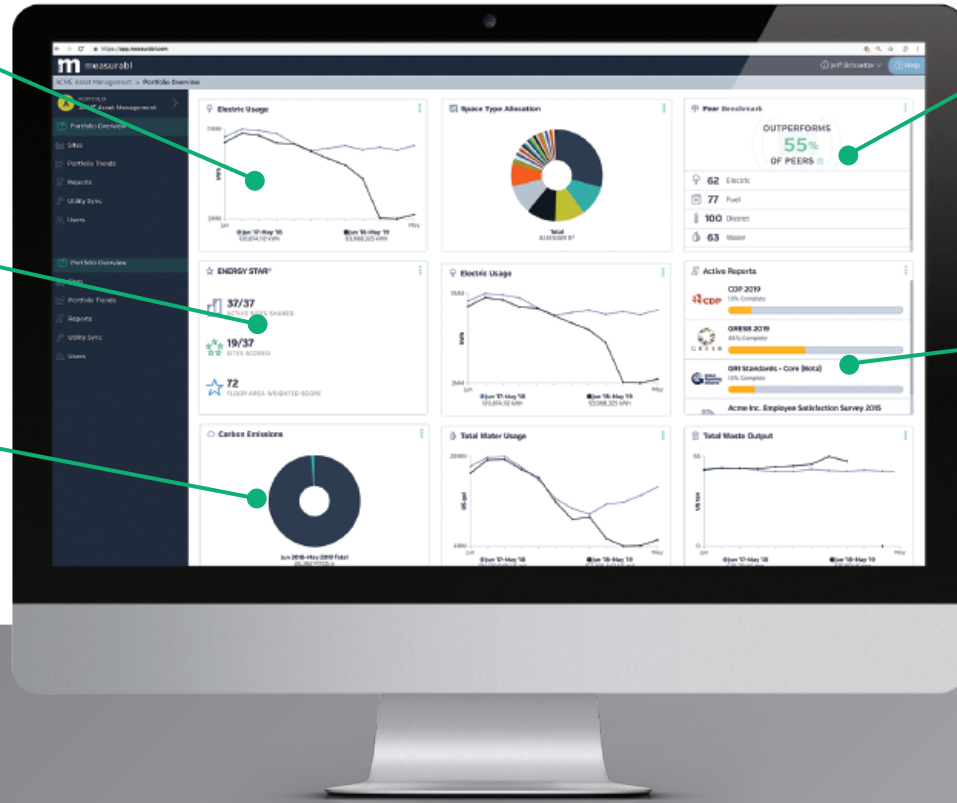
Set and manage building performance goals using captured energy, water and waste utility data, while also ensuring meter data integrity via automated data checks and anomaly detection.

ESG Data Centralization

Add one site or an entire portfolio. Activate one utility account or thousands. Work across one country or dozens.

Data Visualizations

View high-level performance data at the enterprise and site levels via informative dashboards, from peer benchmarking to Scope 1 and 2 carbon emissions.



Performance Tracking for Portfolios & Assets

Normalize weather and occupancy data using Measurabl data points. Record and track historical environmental performance metrics and utility costs on a year-over-year basis.

Advanced Sustainability Reporting

Disclose sustainability data to frameworks such as GRESB and CDP with assurance that it contains best-in-class data integrity, accuracy and completeness.

Projects/Audits

Track and audit sustainability projects like ECMs at site/portfolio levels to help measure ROI.

Renewables Metering

Support a full range of renewable meter types like on/off-grid solar and wind, as well as RECs.

Compliance Monitoring

Receive alerts when an asset is exposed to a North American compliance regime (i.e. California's AB802 or NY Local Law 84).

Investment Grade Portfolio Benchmarking

The ESG era is here. Investors, stakeholders and even consumers are demanding visibility into an organization's sustainability initiatives. Public metrics provide transparency into a company's actions and the challenges ahead.

Companies who disclose have seen a lower cost of capital and higher return on equity. Our new proprietary benchmarking empowers an organization's building stakeholders to compare how sites perform relative to peers, yielding a

credible means to communicate sustainability performance, and focus on day-to-day operations at the asset level. This provides you a single system of record for your sustainability Journey and the right tools for the ESG road that lies ahead.

Certifications/Ratings

Pull in your existing LEED/BREAM green building certifications via advanced geolocation.

ENERGY STAR

We are an ENERGY STAR partner and fully integrated with ENERGY STAR Portfolio Manager.

Give us a call today to discuss your ESG data management needs.

619.719.1716

measurabl.com

